



- Compact Footprint/Low Profile
- Through Hole or SMT Versions
- 5V, 12V, 24V & 48V Inputs
- 3.3 to 30V¹ Single, ± 12 to 15V Dual Outputs
- Output Voltage Adjustment
- Input - Output Isolation
- RoHS Compliant
- 5 Year Warranty

CC-E Series

Ultra Compact, 1.5W to 25W Single & Dual DC-DC Converters

Key Market Segments & Applications

- Telecommunications
- Instrumentation
- Datacom

CC-E Features and Benefits

Features	Benefits
<ul style="list-style-type: none"> • Compact • Self Contained • Multiple Input Voltage configurations • Open Frame (no potting) 	<ul style="list-style-type: none"> • Less PCB Area Used • Requires No External Components • Easier System Configuration • Lighter in Weight, Suitable for Surface Mount (R Version)

Specifications		3.3V	5V	12/15V	$\pm 12/15$ (24/30) ¹
Nominal Output Voltage	V	3.3V	5V	12/15V	$\pm 12/15$ (24/30) ¹
DC Input	V	5V: 4.5-9.0V, 12V: 9-18V, 24V: 18-36V, 48V: 36-76V			
Efficiency	%	71 to 90% model dependant			
Output Voltage Tolerance	%	1.5-10W: $\pm 3\%$, 15-25W: $\pm 5\%$			
Output Adjustment (via trim pin)	V	3.15-3.6V ⁽⁵⁾	4.75-6.0V	11.4-15V	22.8 - 30V
Line Regulation	mV	20 (40 CC15; 30 CC25)		40	80
Load Regulation	mV	40 (120 CC15; 200 CC25)		100	600 ²
Temperature Coefficient	%	$\pm 0.02\%/^{\circ}\text{C}$			
Preload	-	No preload required			
Output Ripple (typ./max.BW 50MHz)	mV	40/120		30/120	
Overcurrent Protection	-	Output current limiting with automatic recovery, shutdown CC15, 25 type			
Overvoltage Protection	-	No			
Remote On/ Off	-	CC1R5, 3, 6, & 10: RC terminal open, output is OFF; RC terminal to -Vin (0-0.4V), output is ON CC15 & CC25: RC terminal open, output is ON; RC terminal to +Vin, output is OFF			
Operating Temp.- Convection	$^{\circ}\text{C}$	-40 $^{\circ}\text{C}$ to +85 $^{\circ}\text{C}$, derates linearly to 40% load from +50 $^{\circ}\text{C}$ to +85 $^{\circ}\text{C}$			
Operating Temp.- Forced Air	$^{\circ}\text{C}$	-40 $^{\circ}\text{C}$ to +85 $^{\circ}\text{C}$ with 1m/s air full load			
Storage Temperature	$^{\circ}\text{C}$	-40 $^{\circ}\text{C}$ to +85 $^{\circ}\text{C}$			
Humidity (non Condensing)	-	95% RH max.(maximum wet-bulb temperature: +38 $^{\circ}\text{C}$)			
Isolation Voltage	-	500VAC 1 min. Input to output, input to case, output to case			
Isolation Resistance	Ω	Input to output, input to case, output to case: 50M Ω min. (500VDC)			
Shock	m/s ²	980m/s ² (100G) 6ms (6 directions, each 3 times)			
Vibration (non Operating)	-	10 to 55Hz (sweep for 15min) 1.52mm constant, 3 directions X, Y, Z each 2 hours			
Safety Agency Approvals	-	UL60950-1, CSA60950-1, EN60950-1			
Weight	g	CC1R5: 3.2, CC3: 4.5, CC6: 5.8, CC10:10.0, CC15: 12.5, CC25: 20.0			
Size (L x W x H) (Through Hole & SMD package)	mm	CC1R5: 16.51 x 16.61 x 8.51; CC3: 22.86 x 16.61 x 8.51; CC6: 22.86 x 21.11 x 8.51 CC10: 35.56 x 22.61 x 8.51 CC15: 38.10 x 32.11 x 7.49; CC25: 43.21 x 44.91 x 7.49 CC3: SIP type 27.69 x 9.19 x 17.91			
Warranty	yrs	5			

Notes:

1. For 24V/30V output - connect across +Vout & -Vout and leave "common out" pin not connected.
2. Based upon equal load current from both outputs. 3. For 15V output connect trim to -Vout.
4. See Installation Manual for full specifications, test methods of parameters and application notes.
5. Not available on CC15 and CC25 models.

Model Selector						
Output Voltage (V)	Output Current (A)	Output Power (W)	5V Input	12V Input	24V Input	48V Input
Single Outputs						
3.3	0.4	1.5	CC1R5-0503SF-E	CC1R5-1203SF-E	CC1R5-2403SF-E	CC1R5-4803SF-E
3.3	0.8	3	CC3-0503SF-E	CC3-1203SF-E	CC3-2403SF-E	CC3-4803SF-E
3.3	1.2	6	CC6-0503SF-E	CC6-1203SF-E	CC6-2403SF-E	CC6-4803SF-E
3.3	2.5	10	CC10-0503SF-E	CC10-1203SF-E	CC10-2403SF-E	CC10-4803SF-E
3.3	4.5	15	-	-	CC15-2403SF-E	-
3.3	7.5	25	-	-	CC25-2403SF-E	-
5	0.3	1.5	CC1R5-0505SF-E	CC1R5-1205SF-E	CC1R5-2405SF-E	CC1R5-4805SF-E
5	0.6	3	CC3-0505SF-E	CC3-1205SF-E	CC3-2405SF-E	CC3-4805SF-E
5	1.0	5	CC6-0505SF-E	-	-	-
5	1.2	6	-	CC6-1205SF-E	CC6-2405SF-E	CC6-4805SF-E
5	2.0	10	CC10-0505SF-E	CC10-1205SF-E	CC10-2405SF-E	CC10-4805SF-E
5	3.0	15	-	-	CC15-2405SF-E	-
5	5.0	25	-	-	CC25-2405SF-E	-
12(15)	0.125(0.1)	1.5	CC1R5-0512SF-E	CC1R5-1212SF-E	CC1R5-2412SF-E	CC1R5-4812SF-E
12(15)	0.25(0.2)	3	CC3-0512SF-E	CC3-1212SF-E	CC3-2412SF-E	CC3-4812SF-E
12(15)	0.5(0.4)	6	CC6-0512SF-E	CC6-1212SF-E	CC6-2412SF-E	CC6-4812SF-E
12(15)	0.8(0.64)	10	CC10-0512SF-E	-	-	-
12(15)	1.0(0.8)	10	-	CC10-1212SF-E	CC10-2412SF-E	CC10-4812SF-E
Dual Outputs						
±12 (15) ³	0.06(0.05)	1.5	CC1R5-0512DF-E	CC1R5-1212DF-E	CC1R5-2412DF-E	CC1R5-4812DF-E
±12 (15) ³	0.125(0.1)	3	CC3-0512DF-E	CC3-1212DF-E	CC3-2412DF-E	CC3-4812DF-E
±12 (15) ³	0.25(0.2)	6	CC6-0512DF-E	CC6-1212DF-E	CC6-2412DF-E	CC6-4812DF-E
±12 (15) ³	0.4(0.32)	10	CC10-0512DF-E	-	-	-
±12 (15) ³	0.45(0.36)	10	-	CC10-1212DF-E	CC10-2412DF-E	CC10-4812DF-E

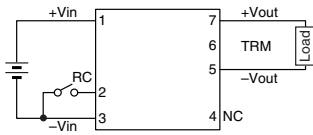
Options	
Version	Description
F-E	Through hole mounting (DIP)
R-E	Surface mount (SMD)
S-E	Through hole mounting (SIP) (SIP option available for CC3 only)

Pinout (CC1R5, 3, 6, and 10)		
Pin	Single	Dual
1	+Vin	+Vin
2	RC	RC
3	-Vin	-Vin
4	NC	-Vout
5	-Vout	Common out
6	TRM	TRM
7	+Vout	+Vout

For CC15 and 25 see Installation Manual online

Pin Out Diagrams CC-E Series

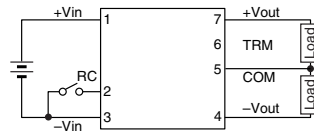
CONNECTIONS CC1R5-□□□□S□-E



TERMINAL PIN CONFIGURATION

No.1	+Vin
No.2	RC
No.3	-Vin
No.4	NC
No.5	-Vout
No.6	TRM
No.7	+Vout

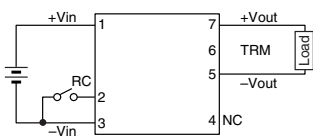
CC1R5-□□□□D□-E



TERMINAL PIN CONFIGURATION

No.1	+Vin
No.2	RC
No.3	-Vin
No.4	-Vout
No.5	Common out
No.6	TRM
No.7	+Vout

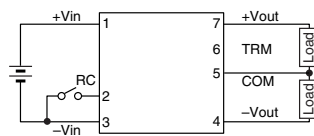
CONNECTIONS CC3-□□□□S□-E



TERMINAL PIN CONFIGURATION

No.1	+Vin
No.2	RC
No.3	-Vin
No.4	NC
No.5	-Vout
No.6	TRM
No.7	+Vout

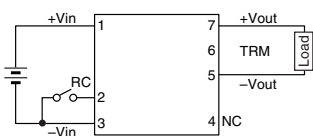
CC3-□□□□D□-E



TERMINAL PIN CONFIGURATION

No.1	+Vin
No.2	RC
No.3	-Vin
No.4	-Vout
No.5	Common out
No.6	TRM
No.7	+Vout

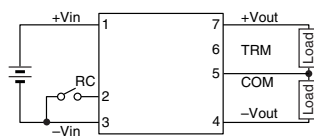
CONNECTIONS CC6-□□□□S□-E



TERMINAL PIN CONFIGURATION

No.1	+Vin
No.2	RC
No.3	-Vin
No.4	NC
No.5	-Vout
No.6	TRM
No.7	+Vout

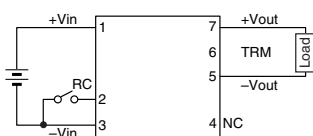
CC6-□□□□D□-E



TERMINAL PIN CONFIGURATION

No.1	+Vin
No.2	RC
No.3	-Vin
No.4	-Vout
No.5	Common out
No.6	TRM
No.7	+Vout

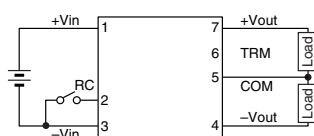
CONNECTIONS CC10-□□□□S□-E



TERMINAL PIN CONFIGURATION

No.1	+Vin
No.2	RC
No.3	-Vin
No.4	NC
No.5	-Vout
No.6	TRM
No.7	+Vout

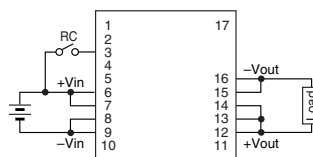
CC10-□□□□D□-E



TERMINAL PIN CONFIGURATION

No.1	+Vin
No.2	RC
No.3	-Vin
No.4	-Vout
No.5	Common out
No.6	TRM
No.7	+Vout

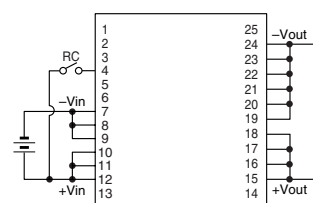
CONNECTION CC15-xxxxSF-E (DIP TYPE)



TERMINAL PIN CONFIGURATION

No.1	NC	No.10	NC
No.2	NC	No.11	NC
No.3	RC	No.12	+Vout
No.4	NC	No.13	+Vout
No.5	NC	No.14	+Vout
No.6	+Vin	No.15	-Vout
No.7	+Vin	No.16	-Vout
No.8	-Vin	No.17	NC
No.9	-Vin		

CONNECTION CC25-xxxxSF-E (DIP TYPE)



TERMINAL PIN CONFIGURATION

No.1	NC	No.10	+Vin	No.19	-Vout
No.2	NC	No.11	+Vin	No.20	-Vout
No.3	NC	No.12	+Vin	No.21	-Vout
No.4	RC	No.13	NC	No.22	-Vout
No.5	NC	No.14	NC	No.23	-Vout
No.6	NC	No.15	+Vout	No.24	-Vout
No.7	-Vin	No.16	+Vout	No.25	NC
No.8	-Vin	No.17	+Vout		
No.9	-Vin	No.18	+Vout		



TDK-Lambda France SAS

3 Avenue du Canada
 Parc Technopolis
 Bâtiment Sigma
 91940 les Ulis
 France
 Tel: +33 1 60 12 71 65
 Fax: +33 1 60 12 71 66
france@fr.tdk-lambda.com
www.fr.tdk-lambda.com



Italy Sales Office

Via dei Lavoratori 128/130
 20092 Cinisello Balsamo (MI)
 Italy
 Tel: +39 02 61 29 38 63
 Fax: +39 02 61 29 09 00
info.italia@it.tdk-lambda.com
www.it.tdk-lambda.com



Netherlands

info@nl.tdk-lambda.com
www.nl.tdk-lambda.com



TDK-Lambda Germany GmbH

Karl-Bold-Strasse 40
 77855 Achern
 Germany
 Tel: +49 7841 666 0
 Fax: +49 7841 5000
info.germany@de.tdk-lambda.com
www.de.tdk-lambda.com



Austria Sales Office

Aredstrasse 22
 2544 Leobersdorf
 Austria
 Tel: +43 2256 655 84
 Fax: +43 2256 645 12
info@at.tdk-lambda.com
www.de.tdk-lambda.com



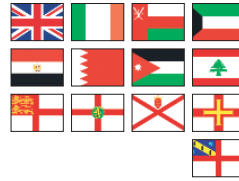
Switzerland Sales Office

Bahnhofstrasse 50
 8305 Dietlikon
 Switzerland
 Tel: +41 44 850 53 53
 Fax: +41 44 850 53 50
info@ch.tdk-lambda.com
www.de.tdk-lambda.com



Nordic Sales Office

Haderslevvej 36B
 DK-6000 Kolding
 Denmark
 Tel: +45 2911 9556
info@dk.tdk-lambda.com



TDK-Lambda UK Ltd.

Kingsley Avenue
 Ilfracombe
 Devon EX34 8ES
 United Kingdom
 Tel: +44 (0) 12 71 85 66 66
 Fax: +44 (0) 12 71 86 48 94
powersolutions@uk.tdk-lambda.com
www.uk.tdk-lambda.com



TDK-Lambda Ltd.

Kibbutz
 Givat Hashlosha 48800
 Israel
 Tel: +9 723 902 4333
 Fax: +9 723 902 4777
info@tdk-lambda.co.il
www.tdk-lambda.co.il



C.I.S.

Commercial Support:

Tel: +7 (495) 665 2627

Technical Support:

Tel: +7 (812) 658 0463

info@tdk-lambda.ru

www.tdk-lambda.ru

Local Distribution

